



Working with you to protect & enhance our village environment & wellbeing

Bearsted Parish Council Newsletter

Madginford Hall, Egremont Road, Bearsted, Maidstone, Kent ME15 8LH
Telephone: 01622 630 165 Website: www.bearstedparishcouncil.gov.uk

Spotlight on traffic matters



The Parish Council is aware of the many traffic issues that concern our residents.

Whilst we are not the highway authority, we do have a "wish list" of improvements we would like KCC highways to undertake, known as our Highway Improvement Plan (HIP).

KCC highways will endeavour to undertake one or two items per year.

The main items at the moment relate to the introduction of

Double Yellow Lines (DYL) in numerous locations to reduce nuisance parking on corners near junctions. We will be paying for these at the junction of Cavendish Way / Copsewood Way and Copsewood Way / Yeoman Way. KCC highways will pay for DYL at the Ashford Road / Roseacre Lane junction. These follow on from numerous complaints regarding inconsiderate parking. We will also be paying for improved signage on Otham Lane, a notorious "rat run".

Although not currently on our HIP we are keen to introduce speed reduction measures for the eastern end of the A20 (Ashford Road) and we are pursuing the possibility of the use of average speed cameras in this area.

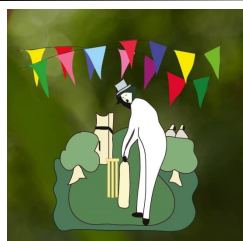
The recently installed crossing at Bearsted station, paid for by the Parish Council, will provide a safer place for people to cross Ware Street to get to the station and will act as a traffic calming measure.

We are also looking at what can be done to reduce traffic speed and inconsiderate parking on the Landway by the 2 schools, following on from a recent incident.

We would support the creation of a community speed watch scheme in the Parish, but this needs at least 8 volunteers to run it. The scheme is co-ordinated by the Police, who will train volunteers to use the equipment. If you feel you would like to be involved in this, please let us know. Without sufficient volunteers this scheme cannot go ahead. Details of how it works and what is involved can be found at www.communityspeedwatch.org

Highway Improvements can take a long time to come to fruition, partly because of the various consultation requirements that need to be met. In some cases we can speed things up by the Parish Council paying for the schemes but this does not happen in all instances and even though the Parish Council has paid for the new crossing at the station and the Gateway feature on the A20 both schemes have taken a considerable amount of time to be completed. Residents are encouraged to attend our traffic and transport committee meetings held every 2 months to see what issues are being discussed.

Bearsted Fayre volunteers needed



The Bearsted Fayre Committee are looking for volunteers! The Fayre takes place on Saturday 29th June and needs a small army of volunteers to make it happen. There are various roles during the weekend and no experience is needed. If you'd like to join the fun sign up at:

www.bearstedfayre.co.uk/volunteer-sign-up

Nature in Bearsted

Bearsted Parish Council are currently working with Medway Valley Countryside Partnership to make improvements to the village pond and Meadow Bank.

The aim is to improve and control the vegetation at the pond to help the wildlife flourish and to turn Meadow Bank into a nature reserve allowing more access for residents to enjoy this natural environment.

Both of these projects will take time and be on-going. If residents are interested, you are welcome to join the team of volunteers on the following workdays:

08/10/24—Meadow Bank

15/10/24—Meadow Bank

22/10/24—Village Pond

12/11/24—Meadow Bank



For more information please contact:
clerk@bearstedparishcouncil.gov.uk



Become a Parish Councillor

!! Notice of vacancy !!

If you have ever considered becoming a Parish Councillor we'd like to hear from you!

Here in Bearsted we have 15 Councillors and run the following committees and working groups:

Comms - Local events such as the Playscheme, Fireworks and Market on the Green.

Environment - Maintaining and improving our open spaces and facilities.

Traffic and Transport - Working with the community and KCC highways to improve the safety of our roads. BPC have two working groups including Planning and Finance. These groups are responsible for making recommendations to Full Council.

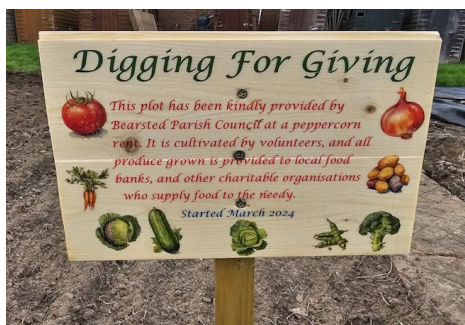
Most committees meet 6 times per year. A full meeting of the Council is held once a month to discuss and agree actions from each committee.

Regular meetings take place on Tuesdays at 7.30pm.

To find out more about the role of a Parish Councillor in Bearsted please get in touch.

admin@bearstedparishcouncil.gov.uk
01622 630165

Digging for giving



A new allotment initiative called Digging for Giving has been set up by local volunteers. They are cultivating a plot, and all produce grown will be donated to local food banks, and other charitable organisations. If there are any businesses or individuals who would like help with donations of seeds, compost, or unwanted garden tools please get in touch.

If you are involved in a food bank or any similar organisation that distributes food to those in need, please register your interest. Contact: Tony at diggingforgiving@gmail.com

Community Payback



Bearsted Parish Council continue to work with the Community Payback service. The team visit Bearsted every month to complete work within the community. On their latest visit the grass verges and pathway were cleared and tidied in the Madginford Road area.

Upgrades at play area

The play area at The Green welcomes a new seesaw with space for more children to play. We hope the local little people enjoy this upgrade.

